

8 7 6 5 4 3 2 1

PROPRIETARY NOTICE:
 TECHNICAL DATA AND DESIGNS DISCLOSED HEREIN ARE THE EXCLUSIVE PROPERTY OF AMERICAN AIR ARMS AND / OR CONTAIN PROPRIETARY RIGHTS OF OTHERS AND ARE NOT TO BE USED FOR MANUFACTURE OR OTHER PURPOSE WITHOUT PRIOR WRITTEN AUTHORITY OF AMERICAN AIR ARMS.

ECO		REV		REVISION HISTORY		DATE	APPROVED
	1			DESCRIPTION	INITIAL RELEASE		

READ THIS WARNING BEFORE PROCEEDING!

Incorrect adjustment of the trigger will create an unsafe condition which may cause the following: Malfunctioning safety and/or inadequate sear engagement resulting in an unexpected discharge during handling and/or operation. This can lead to serious injury or death. If you do not completely understand the operation and interaction of the trigger group components, please leave the adjustment to the factory or a qualified gunsmith!

Adjustments:

- 1) Pre-travel - Determines the distance the first stage will travel before the second stage is engaged. Too short of a pre-travel will prevent proper operation of the safety. Clockwise to decrease and counterclockwise to increase.
- 2) Over Travel - Sets the distance the trigger can travel after the gun has fired. Clockwise to decrease and counterclockwise to increase. Too short of an over travel may cause an inconsistent trigger release or a no fire condition.
- 3) First Stage - Sets the combined first and second stage pull weight (total force to fire). Clockwise to increase and counterclockwise to decrease.
- 4) Second Stage - Sets the differential pull weight between the first and second stages. Clockwise to increase and counterclockwise to decrease.

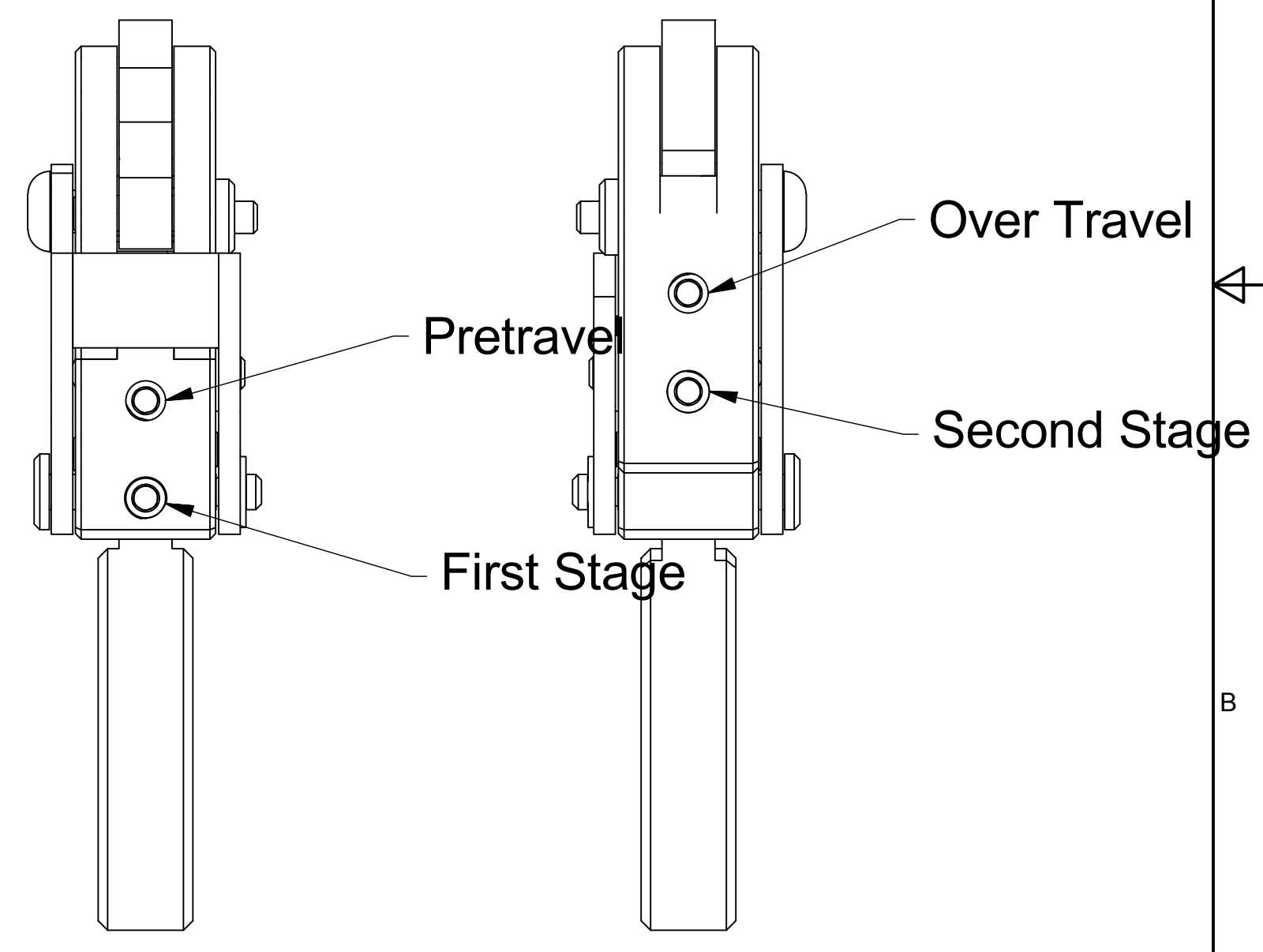
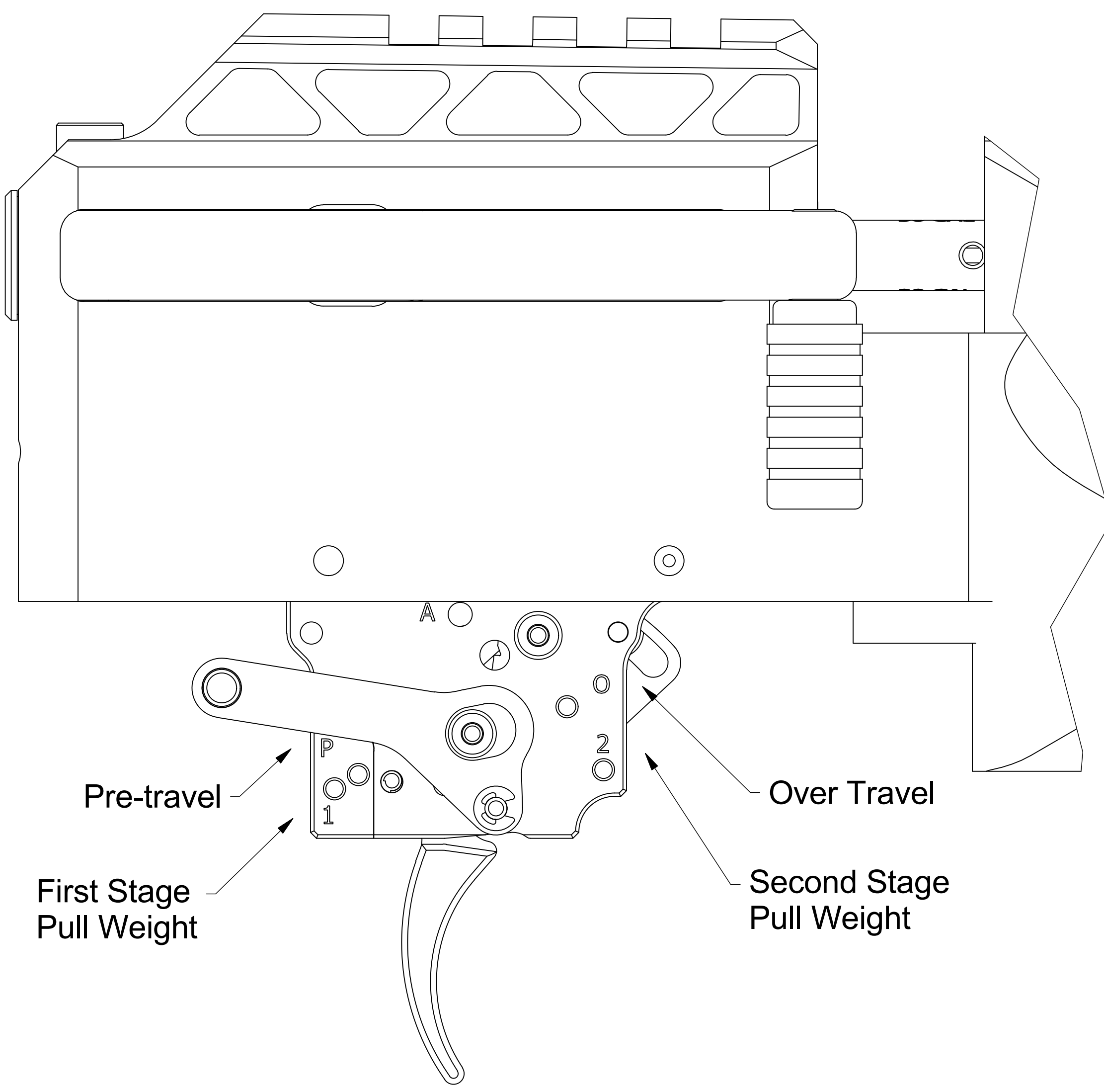
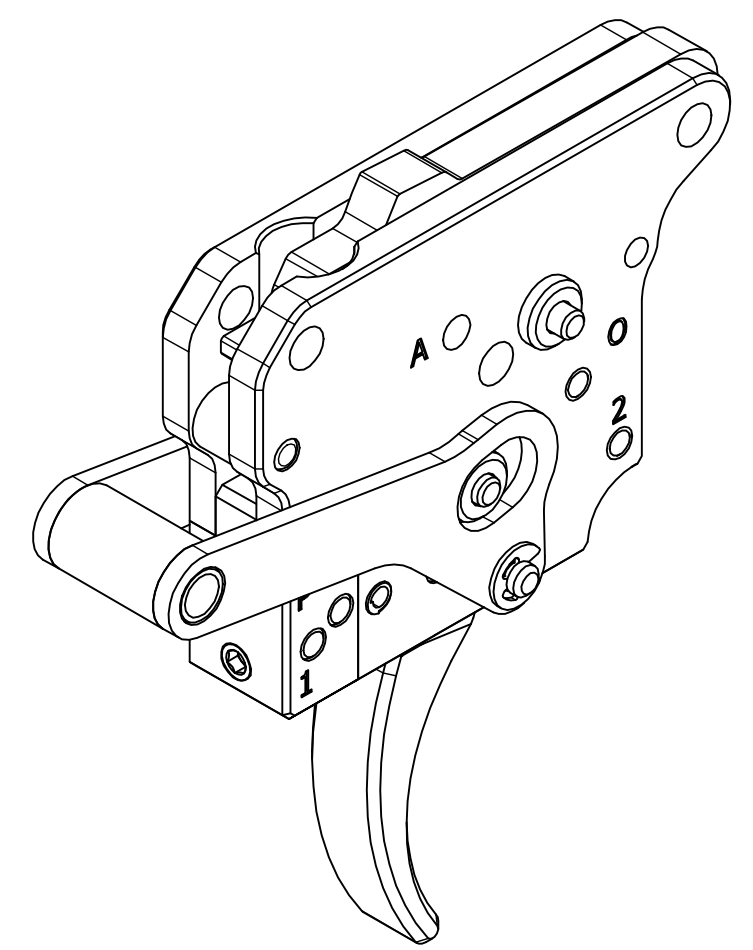
Notes:

- 1) Pre-travel should be adjusted with the safety engaged.
- 2) Do not force adjustment screws beyond their allowable travel. If they are binding, stiff or come to an abrupt stop; stop and back up a small amount.

Tools Required:

- 1) 0.063" hex wrench - All adjustment screws. L-wrench or ball type is recommended.

EVOL Trigger Adjustment



PRELIMINARY

UNLESS OTHERWISE SPECIFIED: ALL DIMENSIONS ARE IN INCHES		APPROVALS		DATE		American Air Arms (661) 468-7520 www.americanairarms.com	
TOLERANCES ARE: FRACTIONS ANGLES DECIMALS +/- 1/32" +/- .5 .X=.02 .XX=.01 .XXX=.005		DRAWN Tom		5/26/2022			
SURFACE FINISH 63 ✓		MECH.				EVOL Trigger Adjustment	
MATERIAL:		PROD.				REF: PA	
FINISH:		QA				REV 1	
		CONFIG.				SHEET 1 OF 1	
		SCALE NONE		FILE TYPE / NAME INVENTOR: EVOL Trigger Adjustment.idw		SHEET 1 OF 1	