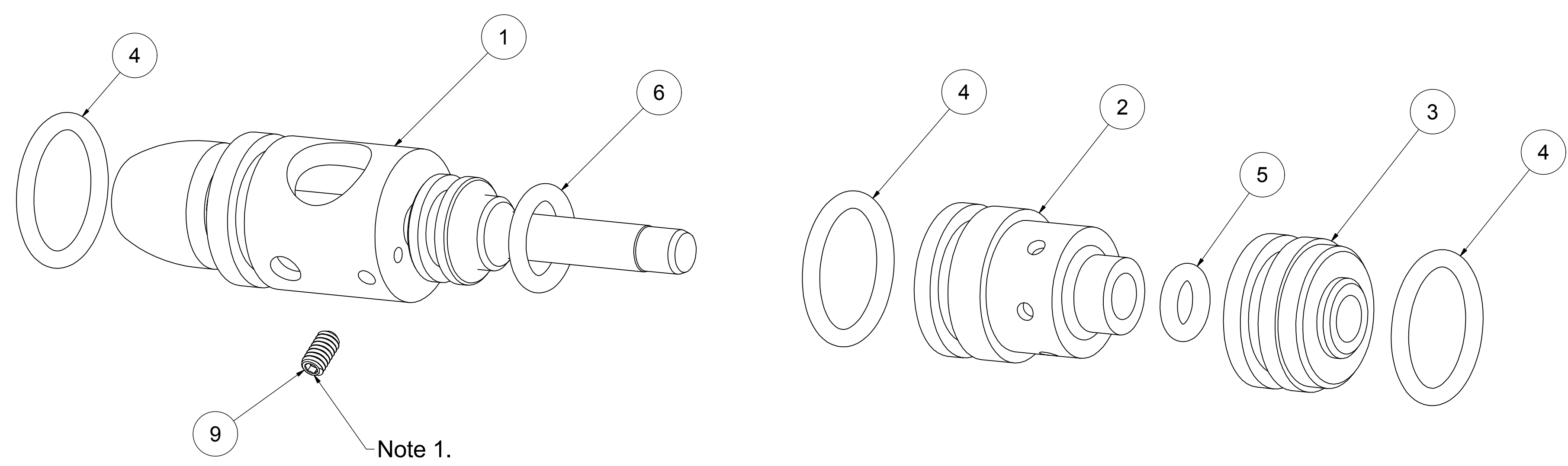


8 7 6 5 4 3 2 1

PROPRIETARY NOTICE:
 TECHNICAL DATA AND DESIGNS DISCLOSED HEREIN ARE THE
 EXCLUSIVE PROPERTY OF AMERICAN AIR ARMS AND / OR CONTAIN
 PROPRIETARY RIGHTS OF OTHERS AND ARE NOT TO BE USED FOR
 MANUFACTURE OR OTHER PURPOSE WITHOUT PRIOR WRITTEN
 AUTHORITY OF AMERICAN AIR ARMS.

REVISION HISTORY			
REV	DESCRIPTION	DATE	APPROVED
A	Taper Seat valve - 357	01/04/2018	TC

Notes:
 1) Metering screw must be removed before removing the
 valve assembly from the receiver.
 If the metering screw is not removed, permanent damage
 will occur to the receiver valve bore.



Parts List, E-200-0001-00, Slayer Valve Assembly - 308, 357			
ITEM	QTY	PART NUMBER	DESCRIPTION
1	1	E-200-0002-00	valve, body/stem assy - 308, 357
2	1	D-200-0002-00	valve, balance gland - 308, 357
3	1	D-200-0003-00	valve, balance stem gland - 308, 357
4	3	C-025-0014-10	o-ring, -14, p70
5	1	C-025-0008-01	o-ring, -08, b90
6	1	C-025-0011-01	O-ring, -11, b90
9	1	C-210-0348-03	set screw, 3-48x.19, HX, S

UNLESS OTHERWISE SPECIFIED: ALL DIMENSIONS ARE IN INCHES TOLERANCES ARE: FRACTIONS ANGLES DECIMALS +/- .1/32" +/- .5 .XX=.01 XXX=.005	APPROVALS	DATE	American Air Arms (661) 468-7520 www.americanairarms.com	
	DRAWN Tom ELEC. MECH. PROD. QA CONFIG.	1/3/2018		
SURFACE FINISH 63 ✓			Slayer, Valve Assembly - 308, 357	
MATERIAL:	SCALE	PROJECT	REF: P/N	REV
FINISH:	NONE	B	E-200-0001-00	A
FILE TYPE / NAME		SHEET		OF
INVENTOR: E-200-0001-00-1.idw		1		1